

A River Puzzle!

Instructions: Make your own river! Cut out the puzzle pieces. Put the SOURCE and MOUTH in the appropriate places. Then put your river together, thinking about how each piece could affect other pieces. Any way you make your river is OK! Just try to create a river that will benefit everyone—for a very long time.



Cut out the puzzle pieces (or ask a grownup for help).



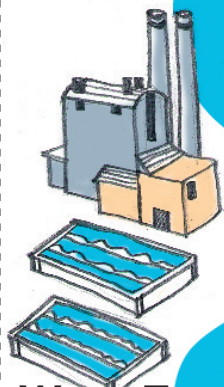
Megalopolis



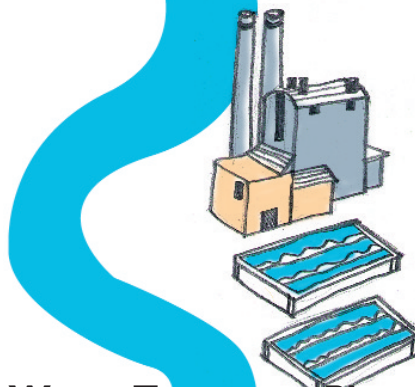
Sewage Treatment Plant



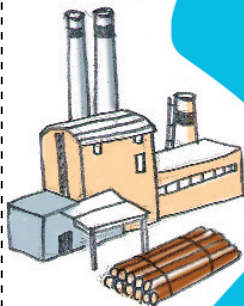
Sewage Treatment Plant



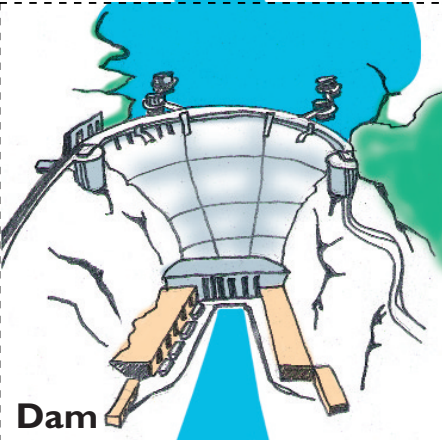
Water Treatment Plant



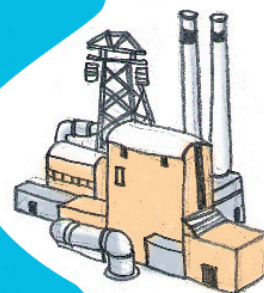
Water Treatment Plant



Paper Mill



Dam

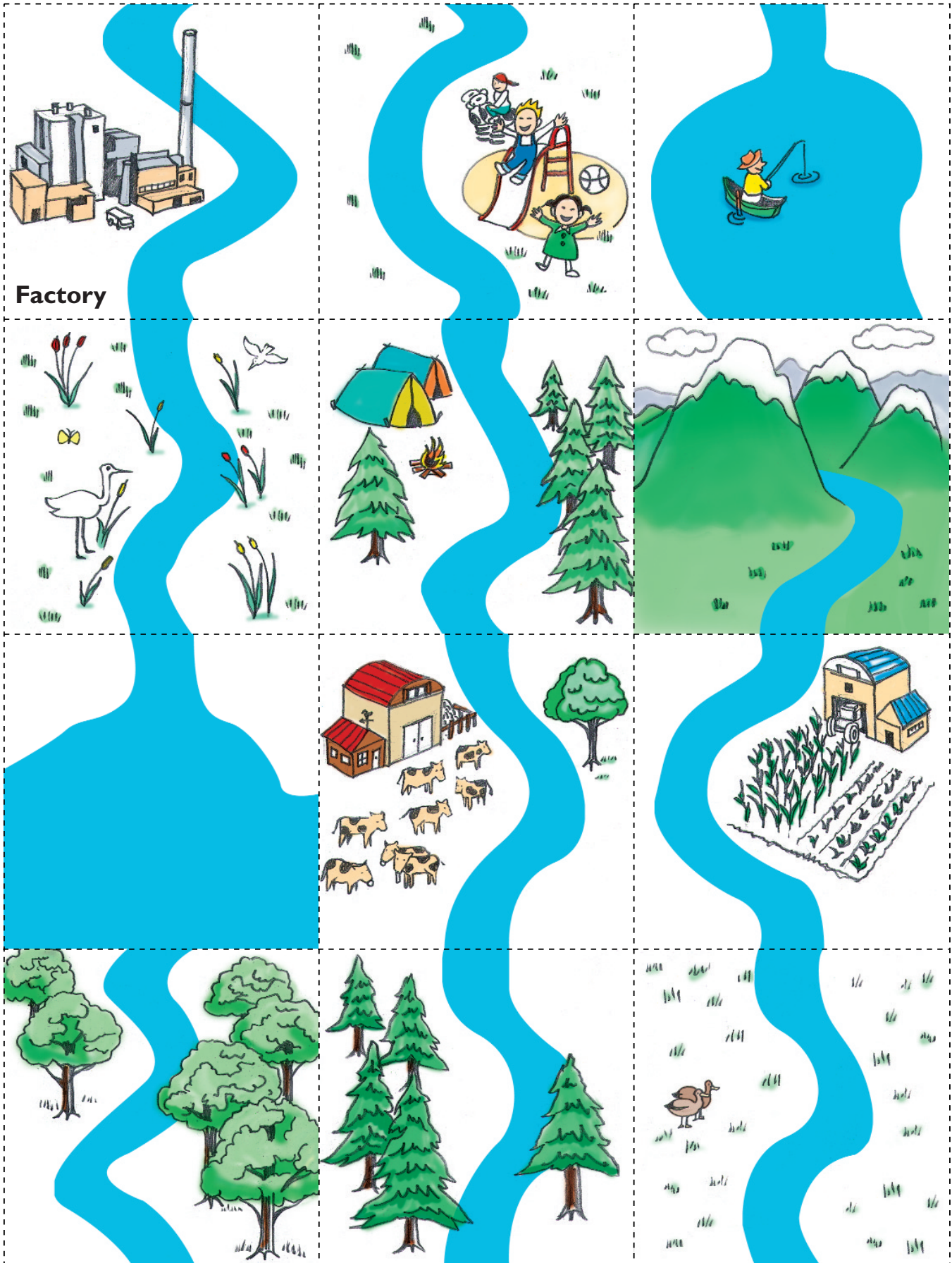


Power Plant

www.nationalgeographic.com/geographyaction

Did you take action for rivers? Tell the world! Fill out the survey at www.nationalgeographic.com/geographyaction.

Teachers: The two-page "River Puzzle" handout accompanies two Saving Our Rivers activities: "A Perfect Little River," for grades K-4; and "A River for the Future," for grades 5-8. Photocopy both pages for students.



Factory

www.nationalgeographic.com/geographyaction

Did you take action for rivers? Tell the world! Fill out the survey at www.nationalgeographic.com/geographyaction.

Teachers: The two-page "River Puzzle" handout accompanies two Saving Our Rivers activities: "A Perfect Little River," for grades K-4; and "A River for the Future," for grades 5-8. Photocopy both pages for students.