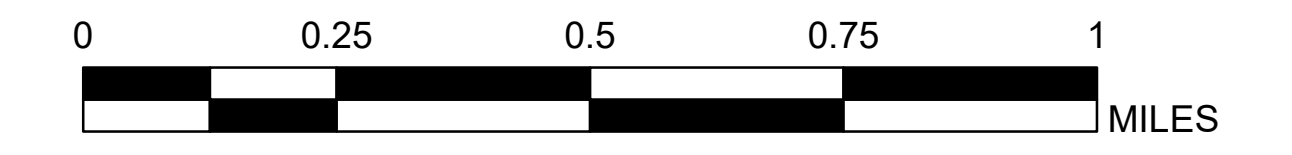
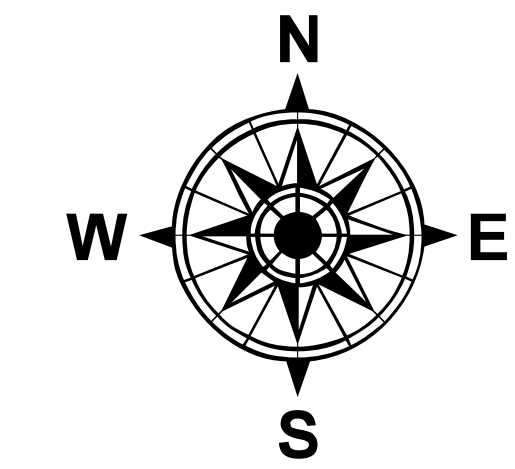
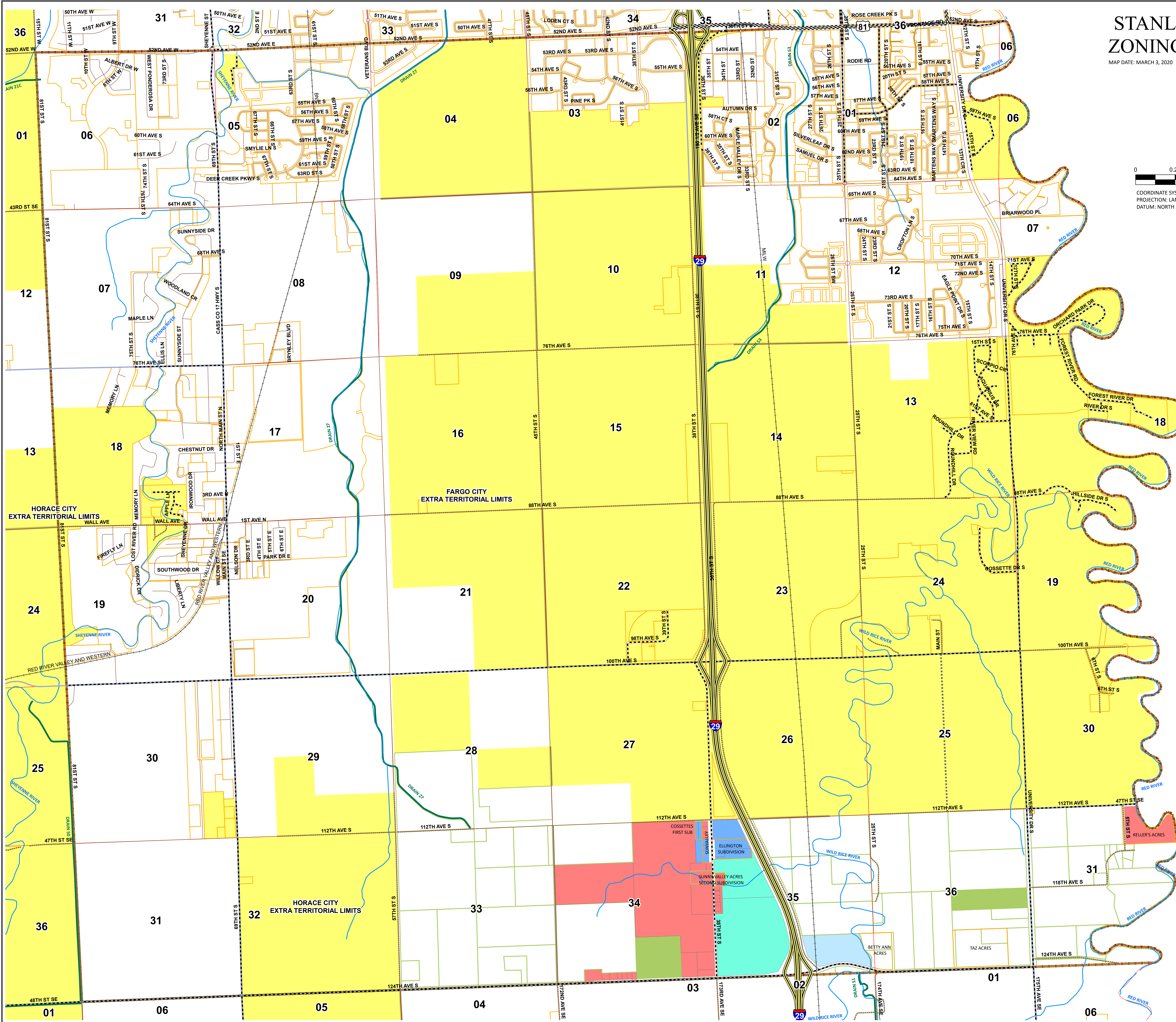


STANLEY TOWNSHIP ZONING & ROAD MAP

MAP DATE: MARCH 3, 2020



COORDINATE SYSTEM: NAD 1983 STATEPLANE NORTH DAKOTA SOUTH FIPS 3302 FEET INTL
PROJECTION: LAMBERT CONFORMAL CONIC
DATUM: NORTH AMERICAN 1983



LEGEND

- STANLEY TOWNSHIP BOUNDARY
- RIVERS
- SUBDIVISIONS
- COUNTY DRAINS
- SECTIONS
- EXTRA TERRITORIAL BOUNDARIES
- RAILROADS
- STATE & FEDERAL ROADS**
- INTERSTATE 29
- US ROUTE PAVED
- COUNTY ROADS**
- MUNICIPAL UNIMPROVED
- MUNICIPAL PAVED
- MUNICIPAL GRAVEL
- MUNICIPAL GRADED & DRAINED
- FEDERAL PAVED
- FEDERAL GRAVEL
- COUNTY UNIMPROVED
- COUNTY PAVED
- COUNTY GRAVEL
- COUNTY GRADED & DRAINED

- ZONING**
- OAG - OPEN SPACE AND AGRICULTURAL CONSERVATION
- OAGU - AGRICULTURAL PRESERVATION/URBAN EXPANSION
- R1 - SINGLE AND TWO FAMILY RESIDENTIAL
- R2 - MULTIPLE FAMILY RESIDENTIAL
- R3 - MANUFACTURED HOME
- R4 - MOBILE HOME PARK
- CN - COMMERCIAL NEIGHBORHOOD
- CG - COMMERCIAL GENERAL
- LI - LIMITED INDUSTRIAL

